



परमाणु ऊर्जा शिक्षण संस्था
Atomic Energy Education Society
कार्यपत्रक / Worksheet (2025-26)

कक्षा /Class: III विषय /Subject: TWAU माह/ Month: July अंक/Marks: 40

दिया गया पाठ्यक्रम/Portion covered: Lesson 4 and Lesson 5

विद्यार्थी का नाम/Name of the student: _____

अनुक्रमांक /Roll No._____ कक्षा/अनुभाग Class /Sec.:_____ दिनांक /Date: _____

SECTION – A

[OBSERVATION AND REPORTING] – (15 marks)

1. Fill in the blanks.

(1 x 5 = 5)

- i) _____ in Mizoram is the biggest flower and as big as an umbrella.
- ii) _____ is the tallest grass.
- iii) Sugar is produced from _____ stems.
- iv) _____ stitch leaves of plants to build their nests.
- v) _____ drink nectar from different flowers

2. Draw a plant and label its parts. (At least five parts.)

(1 x 5 = 5)

3. Match the following with the appropriate name of plant and their type of plant.
(1 x 5 = 5)

i)



MONEY PLANT

CREEPER

ii)



WATERMELON

CLIMBER

iii)



BAMBOO

SHRUB

iv)



CORIANDER

GRASS

v)



CURRY PLANT

HERB

SECTION- B: [IDENTIFYING GROUP AND CLASSIFICATION]-(13 marks)

4. Answer the following questions.

(2 x 5 = 10)

i. What is soil made of ?

ii. Why do some animals chose to live near plants?

iii. How does the root help a plant to grow?

iv. What would happen if there were no plants?

v. What is the role of the stem ?

5. Read the given sentences and circle the appropriate option. (1 x 3 = 3)

i. Trees are (small / large) plants with strong trunks and branches.

ii. Herbs have soft (green /brown) stems and often used in cooking.

iii. (Earthworms / squirrels) live underground.

SECTION –C

[DISCOVERY OF FACTS] –(12 marks)

6. Look at the picture of animals and write their names. You can take help from the help box. (1 x 5 = 5)

Tailorbird	Woodpecker	Squirrel	Camel	Owl
------------	------------	----------	-------	-----

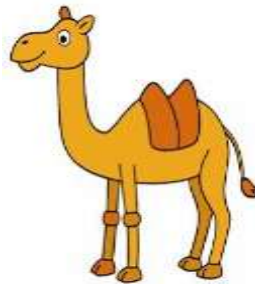
i)



ii)



iii)



iv)



v)



7. Tick the odd one out :-

(1/2 x 4 =2)

- i. Squirrel, Monkey, Owl, Elephant.
- ii. Toor, Masoor, Moong, Coriander.
- iii. Urad , Wheat, Bajra, Ragi.
- iv. Mint, Tomato, Coriander, Rose

8. Answer in one word :-

(1/2 x 4 = 2)

- i. The topmost layer of the Earth's surface is called Ans _____
- ii. What do camels eat from plants? Ans_____
- iii. The hard outer covering of a tree trunk is called Ans_____
- iv. The plants that grow by creeping along the ground are called Ans_____

9. State 'True' or 'False'.

(1 x 3 = 3)

- i. Sunbirds drink nectar from different flowers. _____
- ii. Caterpillars feed on bark of trees. _____
- iii. Barbets use a tree hollow for nesting. _____



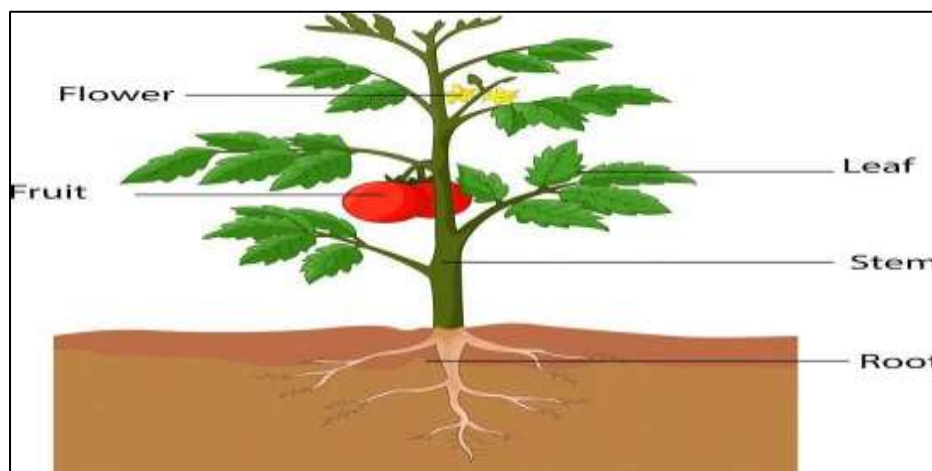
परमाणु ऊर्जा शिक्षण संस्था
Atomic Energy Education Society
उत्तर कुंजी / Answer Key (2025-26)

कक्षा /Class: III विषय /Subject: TWAU माह/ Month: July अंक/Marks: 40
दिया गया पाठ्यक्रम/Portion covered: L – 4 & 5

SECTION – A

[OBSERVATION AND REPORTING] – (15 marks)

- 1.i) Rafflesia
 - ii) Bamboo
 - iii) Sugarcane
 - iv) Tailorbird
 - v) Butterfly
2. Diagram of a plant and its parts. (Accept all probable answer)



- 3.i) Bamboo-Grass
- ii) Coriander- Herb
- iii) Curry Leaf-Shrub
- iv) Watermelon -Creeper
- v) Money Plant-Climber

SECTION- B

[IDENTIFYING GROUP AND CLASSIFICATION]-(13 marks)

4. i) Ans-Soil is made from rocks that have broken up into tiny pieces, as well as old leaves, root, stems and living and dead animals.

- ii) Ans- Some animals chose to live near plants because they are dependent on plants for survival. They get their food and shelter in plants.
- iii) Ans- The roots help a plant to grow by providing nutrients and water deep down from the soil.
- iv) Ans- Without plants, life on earth would be danger. Plants provide food, shelter and habitat for many species, including humans. Without plants, animals would have no oxygen to breathe and would die.
- v) Ans-The stem keep the plant upright and straight. It transports water and nutrients up from the roots all the way to the leaves.

5.i) large ii)green iii)earthworm

SECTION –C

[DISCOVERY OF FACTS] –(12 marks)

6. i) owl ii) woodpecker iii) camel iv) squirrel v) Tailorbird
- 7.i) owl ii) coriander iii) urad iv) rose
- 8.i) soil ii) leaves iii) bark iv) creeper
9. i) True ii)False iii)True



परमाणु ऊर्जा शिक्षण संस्था
Atomic Energy Education Society
कार्यपत्रक / Worksheet (2025-26)

कक्षा /Class: III विषय /Subject: TWAU माह/ Month: August अंक/Marks: 40
दिया गया पाठ्यक्रम/Portion covered: Lessons 5 - Plants and Animals Live Together
and 6 - Living in Harmony
विद्यार्थी का नाम/Name of the student: _____
अनुक्रमांक /Roll No. _____ कक्षा/अनुभाग Class /Sec.: _____ दिनांक /Date: _____

Section: A- (Observation & Reporting)

I. Fill in the blanks :

5M

1. _____ eat leaves of plants.
2. Sunbirds and butterflies drink _____ from different flowers.
3. A caterpillar on *ataragar* plant was eating tender _____ continuously.
4. Animals help plants by _____ seeds and making the soil fertile through their waste.
5. The Grey Wagtails are commonly known as *Vaalattikuruvi* in _____.

II. Write True or False:

5M

1. Plants also need our care and support. _____
2. Shambhu saw a monkey eating a mango and throwing out the seed.

3. Monkeys do not love eating fruits.

4. Birds like owls use twigs from plants to build their nests.

5. We human beings depend on plants and animals for our survival.

III. Solve the riddles. Who am I?

5M

1. I like bananas and swing from tree to tree. Who am I?

2. I'm yellow as the sun and turn to its face, growing tall in any space. What am I?

3. I have a bushy tail and climb trees. I also hoard nuts. Who am I?

4. My needles are soft and grow in bundles of two. I have a distinctive smell and am a popular Christmas tree. What am I?

5. I have a mane but I am not a horse. What am I?

IV. Match the following:

5M

- | | |
|-----------|------------|
| 1. ants | eight legs |
| 2. dog | ten legs |
| 3. spider | six legs |
| 4. birds | four legs |
| 5. crabs | two legs |

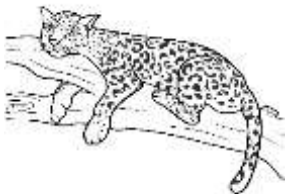
(Section : B – Identification & Classification)

5M

V. Identify the pictures:



1. _____



2. _____



3. _____



4. _____



5. _____

(Section :C – Discovery of Facts)

VI. Answer the following questions:

10M

1. Which animals, birds, insects and plants live with you in your house?

2. Which are the uninvited animals, birds and insects that visit your home ?

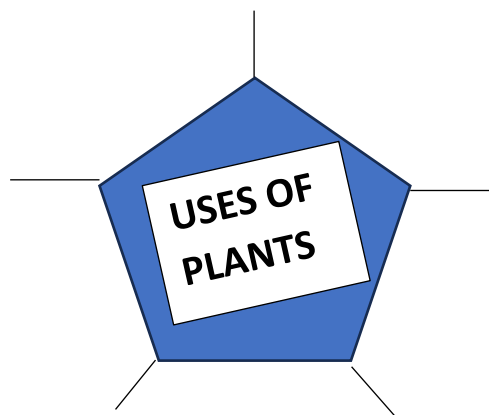
3. How are we dependent on plants and animals ?

4. What are the things that we get from plants ?

5. How do you look after plants and animals in your surroundings ?

VII. Draw and colour any five different uses of plant.

5M





परमाणु ऊर्जा शिक्षण संस्था
Atomic Energy Education Society
उत्तर कुंजी / Answer Key (2025-26)

कक्षा /Class: III विषय /Subject: TWAU माह/ Month: August अंक/Marks: 40
दिया गया पाठ्यक्रम/Portion covered: Lessons 5 – Plants and Animals Live Together
and 6 – Living in Harmony

Section: A- (Observation & Reporting)

I. Fill in the blanks :

5M

1. Camel
2. Nectar
3. Leaves
4. Dispersing
5. Tamil

II. Write True or False :

5M

1. True
2. True
3. False
4. False
5. True

III. Solve the riddles . Who am I ?

5M

1. Monkey
2. Sunflower
3. Squirrel
4. Pine tree
5. Lion

IV. Match the following:

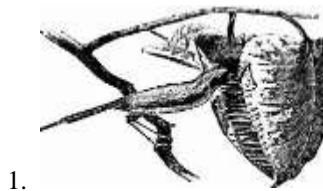
5M

- | | |
|-----------|------------|
| 1. ants | eight legs |
| 2. dog | ten legs |
| 3. spider | six legs |
| 4. birds | four legs |
| 5. crabs | two legs |

(Section : B – Identification & Classification)

V. Identify the pictures:

5M



Tailorbird



Leopard



An owl



Butterfly



Caterpillar

(Section :C – Discovery of Facts)

VI. Answer the following questions:

10M

Ans1. Animals like dog, cat, rabbit, parrots, kakatua, pigeons, rose plant, lilies, sunflower, mango tree, guava tree, jackfruit tree, plaintain plants etc live with us in our house.

Ans2. The uninvited animals, birds and insects that visit our houses are house lizard, cockroach, flies, mosquitoes, rats, snakes, frog, cat, etc.

Ans3. We are dependent on plants for food, shelter, medicines, clothing, oxygen etc and on animals for food , shelter and companionship.

Ans4. We get shade, shelter, medicine, fruits, oxygen, wood etc from plants.

Ans5. We depend on plants and animals for many things. We can talk to our plants and animals when we are happy. We take care and support of some animals and plants in our homes by giving them water, food and shelter. We respect these animals and treat them with kindness, care and compassion.

VII. Draw and colour any five different uses of plant.

5M

